

# Opening up International Horizons

Turun kauppakorkeakoulu  
Turku School of Economics

Peter Zettinig



# Turku School of Economics

## Mission Statement

The Turku School of Economics (TSE) is an international and broadbased university of economic science. Our expertise is based on the advancement of innovative knowledge and its utilisation in the education of future business specialists. TSE is a community of work, study and science, rewarding qualified personnel and motivated students.

# Organization

**COUNCIL**

**Rector**

**COUNCIL FOR ACADEMIC  
RESEARCH AND EDUCATION**  
First Vice Rector

**COMMITTEE FOR RESEARCH  
AND DOCTORAL STUDIES**  
Second Vice Rector

**Director of Administration**  
Administrative Services  
Information Services

## **DEPARTMENTS**

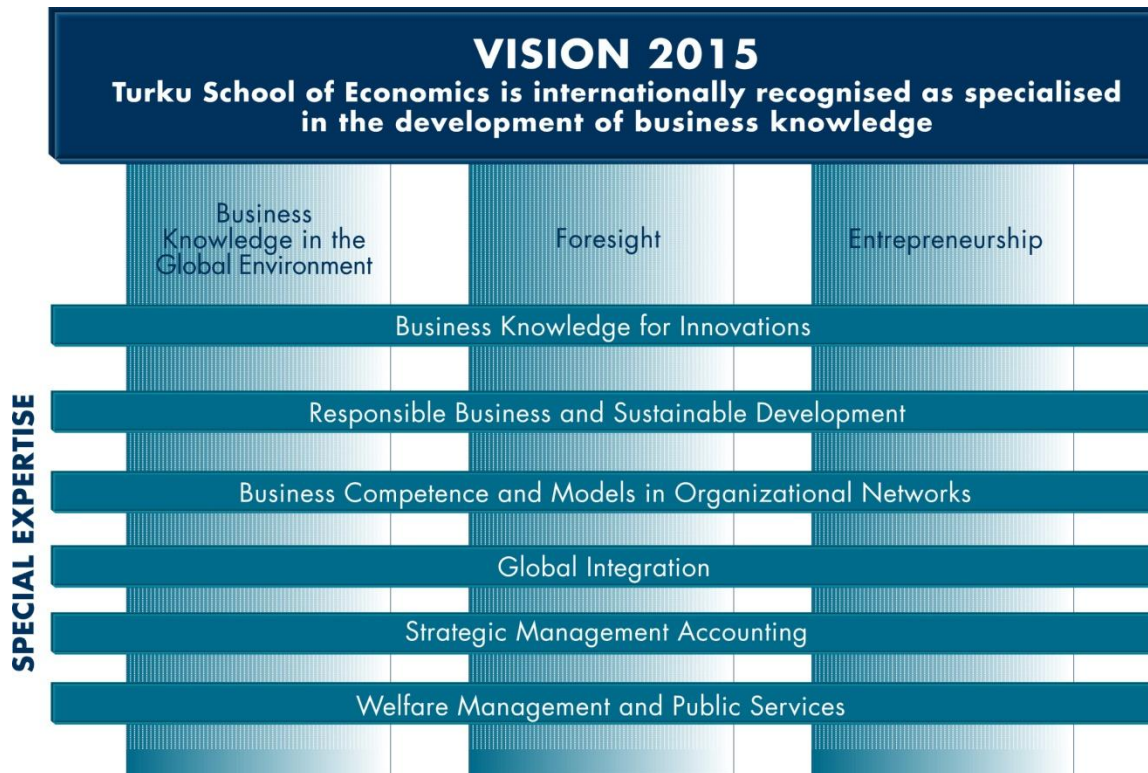
**Management**  
**Accounting and Finance**  
**Marketing**  
**Economics**  
**Languages**

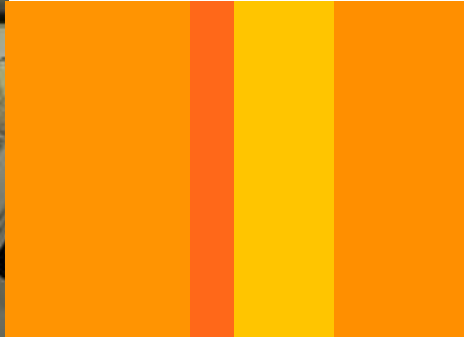
## **SPECIAL UNITS**

**BID Business and Innovation  
Development**  
**CRE Centre for Research and  
Education**  
**Finland Futures  
Research Centre**  
**Pori Unit**  
**Turku Centre for Computer  
Science (TUCS)**



# Major Aspects of Business Knowledge





# CRE Centre for Research and Education

**TSE Entre** is actively involved in developing and renewing entrepreneurship and small business management. The focal areas of interest of the team are growth, family business, entrepreneurship and intrapreneurship and SME policies. The team conducts innovative and high-quality research and training and development programmes within its field of expertise in close co-operation with its clients.

**TSE exe** develops, designs and implements executive education programmes. The clientele includes mainly executives and top-level experts of companies and public sector organizations.

**Institute for Competition Policy Studies** conducts multidisciplinary research on competition policy and competitive strategies.

**Media Futures Network** is an academic research community that focuses on the exploration of the future development in communications and media business.

**Pan-European Institute** observes the development of European economy and business throughout the breadth of the whole continent. It focuses upon following and tracking changes in the eastern part of the European Union and in the neighbouring countries, especially Russia.



# Students

- Basic degrees 2650
- Ph.D. 217
- Non-degree 822
- Open university 767
- Executive training 758
  
- 2962 applicants, intake 370



# Staff

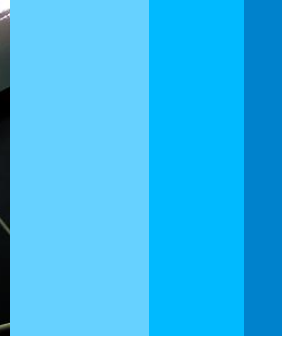
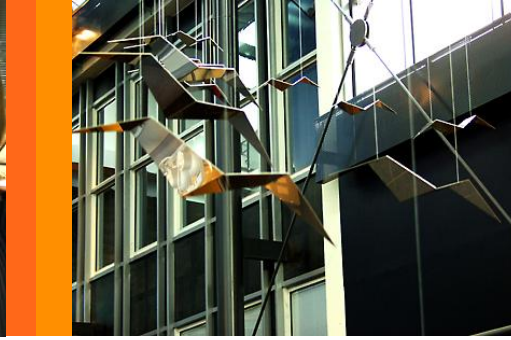
- Total \* 339
  - Departments 139
  - Special units 134
  - Administrative Services 66

\* person-work-years



# Annual budget

- Budgetary funds      17.4 M€
  - Other                      7.4 M€
- Total                      24.8 M€



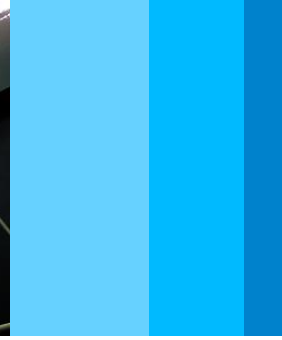
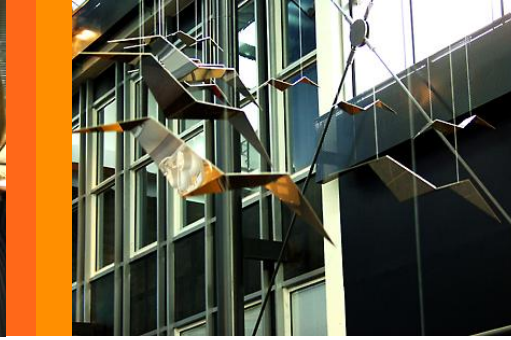
# Degrees

- Bachelor of Science in Economics and Business Administration
- Master of Science in Economics and Business Administration
- Doctor of Science in Economics and Business Administration
- Doctor of Philosophy



## Schedule of the Degrees – Bachelor of Science and Master of Science

1st year	2nd year	3rd year	4th year	5th year
<b>General studies 63 ECTS credits</b>			<b>Methodological studies 7 ECTS credits</b>	
		<b>Studies in major subject 60 ECTS credits (including Bachelor's Thesis)</b>	<b>Studies in major subject 60 ECTS credits (including Master's Thesis)</b>	
		<b>Studies in minor subject 25 ECTS credits</b>	<b>Studies in minor subject 25 ECTS credits</b>	
<b>Language and communication studies 24 ECTS credits</b>			<b>Language and communication studies 10 ECTS credits</b>	
<b>60 ECTS credits</b>	<b>Optional studies</b>		<b>Optional studies</b>	
	<b>60 ECTS credits</b>	<b>60 ECTS credits</b>	<b>60 ECTS credits</b>	<b>60 ECTS credits</b>
<b>B.Sc. (Econ. &amp; Bus. Adm.) 180 ECTS credits</b>			<b>M.Sc. (Econ. &amp; Bus. Adm.) 120 ECTS credits</b>	



# Master's Degree Programmes:

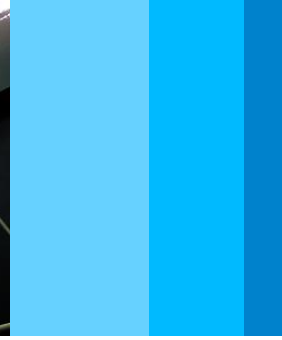
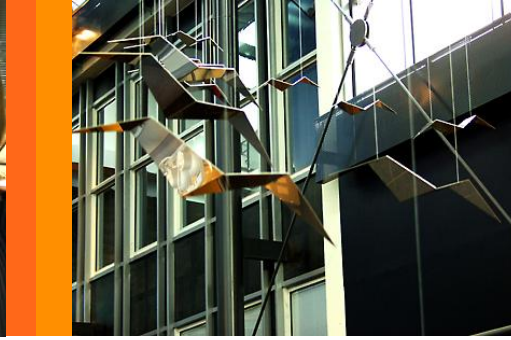
GITM Global IT Management

GIM Global Innovation Management

FUTU Futures Studies

IMMIT International Master's in the Management of IT  
Erasmus Mundus

These 2-year degree programmes are offered in English for an international student body



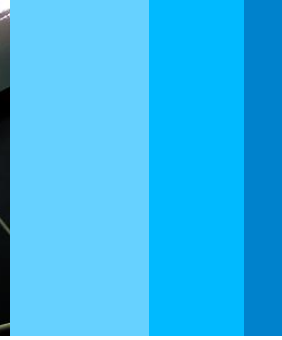
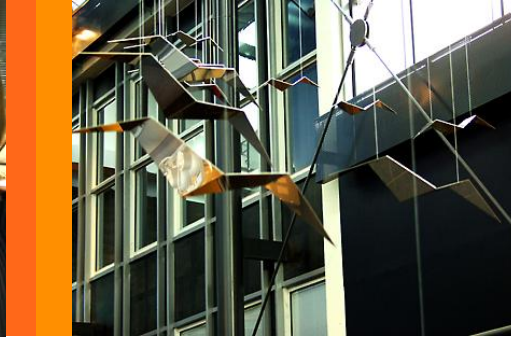
# GITM Global IT Management

In today's globalised business environment, the effective management of international operations is a key for success. Therefore, managers will need to master global operations and how to support them innovatively with information technology (IT). The GITM program is designed to prepare students with a background either in business or information technology or computer science to become hybrid managers at the interface between IT and business functions.



# GIM Global Innovation Management

- train experts that have an ability to work in a changing international environment
- educate skilled professionals who are capable of viewing innovations as part of corporate operations and who understand how innovations can be commercialised
- provide students with the understanding of how corporate innovation processes are globally maintained
- offer high-quality training in social science research methods



# FUTU Futures Studies

- futures business competence in the global environment
- the future business and the business of the future
- management support, strategic thinking and visionary management
- regional, organisational and environmental foresight
- futures studies methods, theories and practices - especially scenario working and environmental scanning



# Curricula

- Business, management, economics
- Over 120 courses in English
- [www.tse.fi](http://www.tse.fi)





# Student Exchange

- 86 partner universities in 34 countries
- 131 incoming exchange students
- 151 outgoing students



# Services for international students

- Accommodation guaranteed
- Health care
- Library and course books
- Computer facilities 7-days a week, 24-hours a day
- E-mail and Internet free of charge
- Legal advice

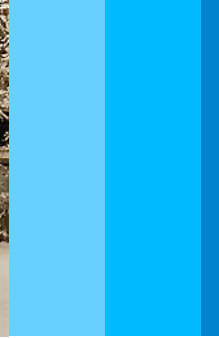
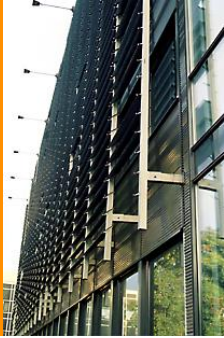




# Services for international students

- Free time activities and trips in Finland and to neighbouring countries
- Student card = reduces prices
- Student tutors (pick-up service and settle-in)
- Orientation programme
- Finnish language course





# Turku School of Economics

Research-intensive  
Truly international  
Modern facilities  
Friendly atmosphere

[www.tse.fi](http://www.tse.fi)